



Elastomer Specialties, Inc.

Custom Molded & Spray Applied Urethane Parts

Custom Molded Urethane Parts

Elastomer Specialties' area of expertise, for over 35 years, has been producing **Custom Molded Urethane Parts and Products** for customers World Wide. Regardless of how intricate the design, the required hardness, color, shape or size, we have both the experience and technology to provide you with the **Quality, Durability and Reliability** you are looking for. If you can provide us with professional drawings, designed on CAD, or even concept sketches, we can produce the mold and give you the finished product you are looking for.



Roller Lagging

Elastomer Specialties' RibbonFlo technology is next to none when it comes to the latest in an abrasive resistant, cosmetically appealing and durable protective coating for conveyor roller cores. At ESI we started perfecting our RibbonFlo process over a decade ago and since that time have been offering our customers the highest quality in a urethane coated roller. Our RibbonFlo Urethane formulation is engineered to permanently bond the material to the steel core and provide a smooth, glass like finish when cured.

At Elastomer Specialties, we have the experience and references to back up our claims as being #1 when it comes to the RibbonFlo process. We formulated the material, manufactured the application equipment and perfected the delivery system, that's why we are the Industry's Leader in RibbonFlo application!



Pipeline & Oilfield Parts

Elastomer Specialties is known World Wide, for their high performance, custom cast urethane parts for both the Oilfield and Pipeline Industry. Our expertise in producing high quality, long lasting parts such as **Rack Padding, Die Liners, Flat and Vee Rollers, Wheels, Fork Tips** and **Cut Back Cups** goes back over 35 years. In the Oilfield business, our long time customer base also dates back to early 80's where we have been private labeling products to some of the most recognized names in the industry. The demand for materials and products in these industries that can withstand the most extreme conditions is a daunting task. Over the years, ESI has engineered cast urethane materials that will withstand some of the toughest conditions and still give our customers the performance and durability they are looking for.



2210 South Highway 69, Wagoner, OK 74467 * 1-800-786-4244 * Tel: 918-485-0276 • Fax: 918-485-0253

www.elastomer.com



Elastomer Specialties, Inc.

Custom Molded & Spray Applied Urethane Parts

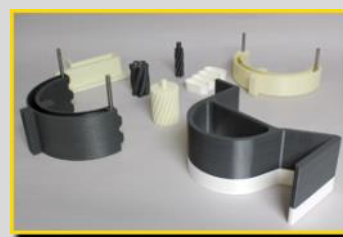
Spray Applied Coatings

Elastomer Specialties has taken their expertise to whole new level. Many casting applications are far too slow that's why we incorporated the use of "**FAST SET**" Spray Applied Coatings. With the advent of this new technology we have the ability to install durable, long lasting Urethane and Hybrid Urethane coatings to an unlimited number of surfaces. This new chemistry offers 5-10 second gel times and Shore hardness's that range from a 65 A up to a 65 D. These coatings are applied using Plural Component, High-Pressure Spray Equipment. Once the material hits the substrate it is tack free within seconds. It immediately and permanently bonds to the surface.



3-D Printing

Elastomer Specialties recently raised the bar when it introduced the "**Ultimate Technology**" in rapid mold and sample part production, 3-D Printing. Driven by performance, ESI has set its sights to the future and now has the ability to provide its customers with the most accurate, stable and durable part or mold possible. Constructed from extremely tough ABS plus thermoplastic material, our FORMUS 250 MC 3-D printer has the capable of generating 3-layer resolutions offering the finest part or mold detail. All our parts or molds are now produced within an accuracy of $\pm 0.241\text{mm}$ (± 0.0095 in.). *No other company can give you better accuracy than ESI's 3-D printing capability.* Our 3-D Printing process is fast, accurate and cost effective. It allows our customers to evaluate and real-life test their parts.



Machine Shop

• Tooling Design & Production • 3-D Printing • In-House Machine Shop!

If you are in the Oilfield, Pipeline, Automotive, Industrial or Manufacturing Industries, ESI is your number 1 source for Custom Cast Urethane Parts and Rapid Mold Production using the latest in 3-D Printing Technology. Our technicians, specialized equipment and advanced technology can assist you in taking your project from inception through design to proto-typing, mold/tooling production and casting, where we provide you with a part that meets your highest expectations. Our Turn-Key operation assures our customers that nothing is outsourced. When you come to ESI, be assured that we are your **One Stop Shop!**

